

HEAD PROTECTION 15.16





Photo: Christina Channer + Stenmanns & Sørensen

HELMET A | SERIES

THE ALL NEW A|SERIES BROUGHT TO YOU BY HEAD HERALDS THE START OF A NEW ERA IN HELMET CONSTRUCTION. THE INNOVATIVE FLEXCORE TECHNOLOGY COMBINES AN EXTRAORDINARY LEVEL OF COMFORT WITH OUTSTANDING IMPACT PERFORMANCE, BY BEING ONE OF THE LIGHTEST ABS HELMETS ON THE MARKET. ADD TO THIS CONTEMPORARY DESIGN AND AESTHETICS AND YOU HAVE A HELMET LINE THAT ATHLETES SHOULD WEAR AND WANT TO WEAR.



HEAD PROTECTION BREEDS CONFIDENCE:
CONFIDENCE BREEDS PROGRESSION.

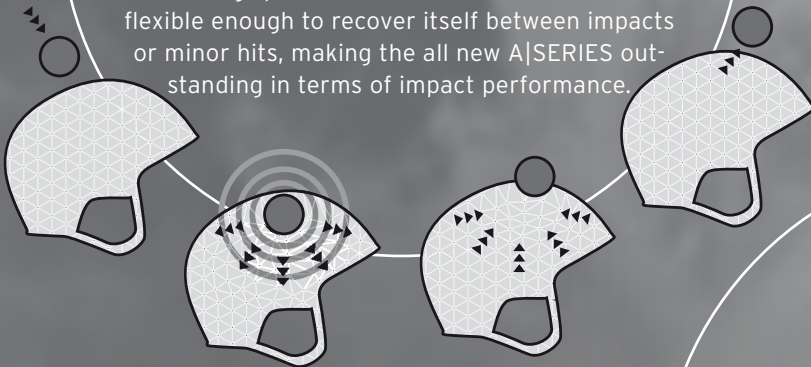
LIGHTWEIGHT

At same level of durability & protection, the only 1.8 mm thin ABS shell used for the new A|SERIES weighs only half of a traditional ABS shell, but offers a maximum level of longevity and safety. In combination with our Flexcore technology, helmets of our A|SERIES weigh up to 15% less compared to traditional ABS constructions. This increases safety, by reducing fatigue of the neck muscles as well as lowering the impact power transmitted to your head in case of an accident.



IMPACT PERFORMANCE

Our new Flexcore technology uses EPP (expanded polypropylen) as core material. While standard helmet cores have great impact performance, but stay deformed when taking a hit. EPP has an exceptionally high strength to weight ratio, paired with a high rebounding speed after distortion. This means it is flexible enough to recover itself between impacts or minor hits, making the all new A|SERIES outstanding in terms of impact performance.



COMFORT

Nomen est omen - our new Flexcore technology is made from flexible EPP Core material, combined with a super thin ABS shell. While standard helmets are rigid, the A|SERIES is able to adapt itself to individual head shapes. In addition to its flexibility, EPP offers great thermal insulation. An innovative ventilation-channel-system, controlled by 13 vent holes caters to a constant airflow and hence guarantees a pleasant helmet climate.



HELMET TECHNOLOGY



HARDSHELL

This helmet technology is outstanding in longevity and impact protection. For this reason we use it in our race and rental helmets.



HYBRID

Hybrid shell construction combines the robustness of ABS technology with the weight-saving characteristics of In-Mold construction.



IN MOLD

The shock absorbing inner EPS layer of this technology is injected into the hard outer polycarbonate layer to create a single comprehensive unit that provides perfect protection at a reduced weight.



FLEXCORE

The revolutionary Flexcore technology uses innovative polymer technology, making it outstanding in terms of impact performance, weight & comfort.



HELMET CONSTRUCTION

CONSTRUCTION

CARBON

The shell of the helmet is made from carbon fibres, which increases safety and decreases weight. This is why this technology is used for our race helmets.

CONEHEAD SANDWICH CORE

The particular, pyramid-like structured two-layer foam ensures that shocks are better absorbed and that the impact energy is evenly distributed over the helmet.

DUAL DENSITY CORE

This patented Core technology is made from EPS with Dual densities. This increases the helmets performance so it passes the FIS RH 2013 standard.

LOWER MICROSHELL

The helmet body is also coated with polycarbonate in order to avoid scratches and dents in the foam.

METAL CHINSTRAP BUCKLE

High-performance steel buckle, used in Head racing helmets.

RECCO RESCUE SYSTEM

RECCO® technology makes you searchable to professional rescuers in the event of an avalanche accident.

VENTILATION

ADJUSTABLE DUAL ZONE VENTILATION

The ventilation in the two air ducts may be optimally adjusted independently from each other by means of two slide controls at the front and back side of the helmet.

ADJUSTABLE VENTILATION

The opening of the ventilation ducts on the top of the helmet may be adjusted continuously by means of a slide control.

THERMAL VENTILATION

Thermal ventilation is our automatic ventilation system which channels warm air away from the head to the outside without allowing any cold air to the inside.

ACTIVE VENTILATION

This ventilation technology automatically regulates the helmet climate, by channeling off moist when needed and assuring a constant airflow in the helmet.

LINING

SYMPATEX LINER

Sympatex liner ensures excellent climate control. The HIGH2OUT laminate guarantees fast, effective sweat removal from the head while blocking moisture from coming in from the outside.

BEANIE LINER

The soft microfleece material of the Beanie liner adapts perfectly to the head and thus avoids any bruises and the unpleasant entering of cold air. Molded-in mesh Zones let heat and moisture escape to the outside and, together with the ventilation system, ensure a pleasant head climate.

SEAMLESS BEANIE LINER

The seamless Beanie liner is made without protruding seams for a snug more comfortable fit without pressure points.

WOMEN SPECIFIC BEANIE LINER

Women have a different head shape than men. This is why we developed a Beanie liner for women which is exactly adapted to the anatomy of the female head. This was achieved by means of two differently thick padding zones made of soft microfleece.

COMFORT ZONE LINER

Soft liner pads provide perfect fit & comfort at a fraction of the weight.

LINER WINDSHIELD

If it is very cold or stormy, the forehead above the goggles may be exposed to extreme temperatures. The liner Windshield integrated in the Beanie liner may simply be folded down if required and will thus close the gap between helmet and goggles. A small feature with great effect.

BLUETOOTH UNIT WITH CONTROL PANEL & MICROPHONE

Wirelessly BLUETOOTH connectivity = no more cables; no pulling off gloves to take calls.

AGION™ ANTIMICROBIAL LINING

We use an antimicrobial Agion™ material for our liners. The combination of disinfecting silver ions and a preceramic coating makes the surface antimicrobial and the helmet remains odorless.

SOFT VELVET

A soft and at the same time durable material which absorbs the moisture and thus keeps the head dry.

EARPADS / NECKGATOR

HEIGHT ADJUSTABLE EARPADS

Due to the fact that not all people have their ears at the same height, we developed a patented system for the height adjustment of the ear pads. This system guarantees an optimal hearing and perfect fit of the helmet. Of course you can completely remove our ear pads including Neckgator on warm days or for cleaning purposes.

BOA 360°

The 360° FIT system by BOA evenly adjusts the fit of the helmet to all shapes of head.

3D FIT

Head 3D fit allows an exact horizontal as well as vertical adjustment of the helmet to the shape of your head.

2D FIT

The size adjustment system may be varied horizontally in order to individually adjust the helmet to your head.

REMOVABLE EARPADS

These ear pads and neckgators can be removed to suit the variable weather conditions and for cleaning.

HAIRPORT

The asymmetric positioning of the dial creates a Hairport for ponytails.

HELMET FITTING

Model	Size (cm)	XS	S	M	L	XL	XXL
STIVOT RACE	52-53	54-55	56-57	58-59	60-61	62-63	
STIVOT RACE YOUTH	52-53	54-55	56-57	58-59			
SLALOM RACING CHINGUARD for helmet size	XS/S	XS/S	M/L	M/L	XL/XXL	XL/XXL	

Model	Size (cm)	XXS	XS/S	M/L	XL/XXL
CREST, ANDOR, AGENT, SEONOR, BEACON, REBEL, STIVOT SL, VENTOR PRO R, VENTOR R			52-55	56-59	60-63
CARMA, ALIA, AVRIL, GRACE, CLOE, STIVOT YOUTH SL			52-55	56-59	
AI R YOUTH, VENTOR YOUTH R		49-51	52-55	56-59	
RENTAL SR		48-51	52-55	56-58	59-64
RENTAL JR		48-51	52-55	56-58	

Model	Size (cm)	XXS/XS	S/M
JOKER, STAR		49-52	53-56



FIND THE RIGHT SIZE

Measure your head circumference with a tape measure which you apply above your ears. You will find the correct helmet size for your head circumference in the table below.



PUTTING ON THE

helmet and adjusting the chin straps

The helmet shall sit tightly on your head directly above your eyebrows. Adjust the two chin straps so that they solidly fix and hold the helmet.



CHECK FIT WITH GOGGLES

In order to check the perfect fit of the helmet, please put on your goggles. There should be no gap at all or an only small gap between the upper edge of your goggles and the helmet.



STIVOT RACE CARBON

The choice of World Cup Rebels.

ARTICLE NUMBER

320004 black

320014 pink

320025 white/black

FEATURES

Hardshell technology, Carbon

TPR goggle retainer, Metal chinstrap buckle

Beanie liner, Chinguard compatible

SIZES

XS	S	M
53-54 cm	55-56 cm	57-58 cm
L	XL	XXL
59-60 cm	60-61 cm	61-62 cm
AVERAGE WEIGHT		560 g



STIVOT SL + CHINGUARD

The Stivot SL is a multifunctional helmet with Removable Chinguard made for skiers with racing ambitions.

ARTICLE NUMBER

320404 black

320414 pink

320425 white/black

376103 slalom racing Chinguard

FEATURES

Hardshell technology

TPR goggle retainer, Thermal ventilation

Beanie liner, Head 2D fit

SIZES	XS/S	M/L
	52-55 cm	56-59 cm
	XL/XXL	
	60-63 cm	
AVERAGE WEIGHT	570 g	





SENSOR BT RUNTASTIC

Stay connected on the slopes.

ARTICLE NUMBER

324013

FEATURES

In-mold technology, Lower Microshell
Beanie liner, Integrated Lower Microshell
Adjustable ventilation
Height Adjustable earpads, Agion™
Head 2D fit, Bluetooth unit
incl. Heart rate Monitor
incl. Runtastic Pro App

SIZES	XS/S	M/L
	52-55 cm	56-59 cm
	XL/XXL	
	60-63 cm	
AVERAGE WEIGHT	500 g	



SENSOR

Classic design and
prizewinning safety.

ARTICLE NUMBER

324215 black

FEATURES

In-mold technology, Lower Microshell
Beanie liner, integrated Lower Microshell
Adjustable ventilation
Height Adjustable earpads, Agion™, Head 2D fit

SIZES	XS/S	M/L
	52-55 cm	56-59 cm
	XL/XXL	
	60-63 cm	
AVERAGE WEIGHT	395 g	



KNIGHT

Perfect fit – no air draft.
Our new helmet with integrated Visor.

ARTICLE NUMBER

324035 black

324045 white

FEATURES

In-mold technology, Lower Microshell

Beanie liner, Visor, Thermal ventilation

Removable earpads, Head 2D fit

SIZES	M/L	XL/XXL
	54–57 cm	58–61 cm
	60–63 cm	
AVERAGE WEIGHT	395 g	



ANDOR

Comfort, durability and lightweight –
with new Flexcore technology.

ARTICLE NUMBER

324075 black

324085 black/lime

324095 yellow

FEATURES

Flexcore technology, Sympatex liner

Active ventilation, 360° Boa Fit

SIZES	XS/S	M/L
	52–55 cm	56–59 cm
	XL/XXL	500 g
	60–62 cm	
AVERAGE WEIGHT	500 g	



CREST

Keeps your head safe
in the backcountry.

ARTICLE NUMBER

324115 black

FEATURES

Hybrid technology, Conehead Sandwich
Core, seamless Beanie liner, Integrated
Lower Microshell, Adjustable Dual
Zone ventilation, Height Adjustable
earpads, Agion™, Head 3D fit

SIZES	XS/S	M/L
	52–55 cm	56–59 cm
	XL/XXL	
	60–63 cm	
AVERAGE WEIGHT	540 g	



AGENT

Flexcore technology for aspiring
youngsters

ARTICLE NUMBER

324145 recco

324155 black

324165 black/red

324175 blue

FEATURES

Flexcore technology, Beanie liner
Thermal ventilation, 360° Boa Fit
RECCO rescue system

SIZES	XS/S	M/L
	52–55 cm	56–59 cm
	XL/XXL	
	60–62 cm	
AVERAGE WEIGHT	500 g	





REBEL

Uncompromising safety for a fair price.

ARTICLE NUMBER

324645 black

324655 blue

324675 white

FEATURES

In-mold technology

Lower Microshell, Beanie liner

Thermal ventilation, Removable earpads

Head 2D fit

SIZES	XS/S	M/L
	52-55 cm	56-59 cm
	XL/XXL	
	60-63 cm	
AVERAGE WEIGHT	390 g	



ARISE

Jack of all trades.

ARTICLE NUMBER

328405 black

328415 blue

328425 green

FEATURES

Flexcore technology

Comfort Zone liner

Thermal ventilation, Removable earpads

Head 2D fit

SIZE & WEIGHT	XS/S	M/L
	52-55 cm	56-59 cm
	XL/XXL	
	60-62 cm	
AVERAGE WEIGHT	500 g	





ALIA

Innovative technology paired with uncompromising Comfort.

ARTICLE NUMBER

325055 white

325065 turquoise

FEATURES

Flexcore technology, Sympatex liner

Active ventilation, 360° Boa Fit

SIZES	XS/S	M/L
	52-55 cm	56-59 cm
AVERAGE WEIGHT	500 g	



GRACE

Stay classy.

ARTICLE NUMBER

325135 white

FEATURES

In-mold technology, Lower Microshell

Women specific Beanie liner

Integrated Lower Microshell

Adjustable ventilation

Height Adjustable earpads, Agion™

Hairport, Head 2D fit

SIZES	XS/S	M/L
	52-55 cm	56-59 cm
AVERAGE WEIGHT	395 g	



CARMA

Keeps your head safe
in the backcountry.

ARTICLE NUMBER

325015 white

FEATURES

Hybrid technology, Conehead Sandwich
Core, Women specific seamless Beanie liner
Integrated Lower Microshell
Adjustable Dual Zone ventilation
Height Adjustable earpads
Agion™, Hairport, Head 2D fit

SIZES	XS/S	M/L
	52–55 cm	56–59 cm
AVERAGE WEIGHT	540 g	



AVRIL

Comfortable protection
for charging riderettes.

ARTICLE NUMBER

325105 RECCO

325215 black

325225 white

325235 turquoise

FEATURES

Flexcore technology, Beanie liner
Thermal ventilation, 360° Boa Fit
RECCO rescue system

SIZES	XS/S	M/L
	52–55 cm	56–59 cm
AVERAGE WEIGHT	500 g	



CLOE

Women specific freestyle helmet.

ARTICLE NUMBER

325615 black

325625 white

325635 mint

FEATURES

In-mold technology, Women specific

Beanie liner, Lower Microshell

Thermal ventilation

Removable earpads, Hairport

Head 2D fit

SIZES	XS/S	M/L
	52-55 cm	56-59 cm
	390 g	
AVERAGE WEIGHT	390 g	



AROSA

Fresh look for fresh girls.

ARTICLE NUMBER

328505 black

328515 white

328525 d'blue

FEATURES

Flexcore technology, Comfort Zone

liner, Thermal ventilation, Removable

earpads, Head 2D fit

SIZES	XS/S	M/L
	52-55 cm	56-59 cm
AVERAGE WEIGHT	500 g	



STIVOT RACE YOUTH CARBON

The helmet for tomorrow's racing stars.

ARTICLE NUMBER

328004 black

328014 pink

328025 white/black

FEATURES

Hardshell technology, Carbon

TPR goggle retainer, Beanie liner

Chinguard compatible

SIZES	XS	S
	53-54 cm	55-56 cm
	M	L
	57-58 cm	59-60 cm
AVERAGE WEIGHT	560g	



STIVOT YOUTH SL + CHINGUARD

Stay safe when hitting the gates.

ARTICLE NUMBER

328204 black

328214 pink

328225 White/Black

FEATURES

Hardshell technology

TPR goggle retainer, Thermal ventilation

Beanie liner, Head 2D fit

SIZES	XS/S	M/L
	52-55 cm	56-59 cm
AVERAGE WEIGHT	570 g	





JOKER

Full protection from
the first day on the snow.

ARTICLE NUMBER

328615 black

328625 green

FEATURES

In-mold technology, Thermal ventilation

Soft velvet lining, Head 2D fit

SIZES	XXS/XS	S/M
	49-52 cm	53-56 cm
AVERAGE WEIGHT	350 g	



STAR

Full protection from
the first day on the snow.

ARTICLE NUMBER

328715 pink

328725 orange

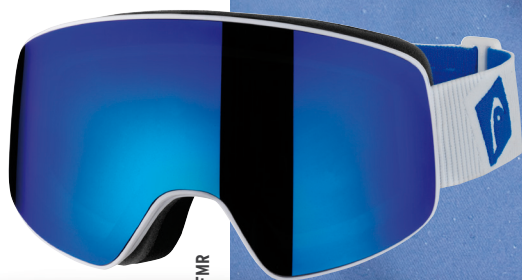
FEATURES

In-mold technology, Thermal ventilation

Soft velvet lining, Head 2D fit

SIZES	XXS/XS	S/M
	49-52 cm	53-56 cm
AVERAGE WEIGHT	350 g	

Photo: Cristina Eummei - Sternmanufaktur



HORIZON FMR

THE NEW HEAD GOGGLES 15.16

HEAD

GOGGLE TECHNOLOGY

PERFECT LOOK, PERFECT SIGHT.
INNOVATION IS IN OUR DNA – WE DESIGN PRODUCTS THAT MEET THE
HIGH STANDARDS OF OUR ATHLETES. RICH IN FEATURES, DESIGNED
RIGHT DOWN TO THE DETAIL.

FEATURES

EXTREME WIDE FIELD OF VISION

Head's goggles with an extra wide field of vision are perfect for racers, allowing a tight aerodynamic tuck without impaired vision

SPARELENS INCLUDED

COMPATIBLE WITH ALL HEAD HELMETS

LENS

INJECTED POLYCARBONATE DOUBLE LENS

Lightweight Polycarbonate lenses are up to 10 times more impact-resistant than plastic or glass lenses and provide 100% protection from harmful UV rays.

INJECTED POLYCARBONATE SPHERICAL DOUBLE LENS

A spherical lens has a consistent vertical and horizontal curve for a true and clear field of vision.

UV400 PROTECTION

UV400 protection keeps out 100% of UVA and UVB light; 5% better than the level of protection approved by the EU.

ANTI FOG

Additional coating that provides maximum protection against unwanted lens fogging and moist scratching.

MATERIAL

TRIPLE-LAYER FOAM





Triple-Layer foam keeps out the elements and provides maximum levels of Comfort, performance and fit.

DOUBLE-LAYER FOAM

Double-Layer foam delivers perfect fit and Comfort and a balanced micro-climate within the goggle.

COMFORT FOAM

The Comfort Foam seals out wind and snow and provides a precise, comfortable fit.

WEATHER	CATEGORY	UV PROTECTION	PERCENTAGE VLT	RECOMMENDED USAGE
	CAT 0	UV 400	87	the ideal lens for night time use, flood light
	CAT 1	UV 400	78	the ideal lens at fog and strong clouds
	CAT 2	UV 400	24,48	this lens increases contrasts, improves depth perception, good for all conditions
	CAT 3	UV 400	14,09	reduces eye fatigue in bright and sunny conditions



Sparelens



HORIZON RACE

Extreme wide Field of Vision for those with speed in mind.

ARTICLE NUMBER

373305 DH lime* + Sparelens

373314 black + Sparelens

373324 lime + Sparelens

373335 white + Sparelens

FEATURES

Windsealed main frame*

Injected Polycarbonate double lens

UV400 protection, Anti Fog

Triple-Layer foam

Extreme wide Field of Vision

compatible with all HEAD helmets

Sparelens included

HORIZON LENS KIT

Our answer to constantly changing weather conditions.

ARTICLE NUMBER

373954

DESCRIPTION	WEATHER	CATEGORY	UV PROTECTION	PERCENTAGE VLT	RECOMMENDED USAGE
CLEAR Lens, No coating		CAT 0	UV 400	87	the ideal lens for night time use, flood light
YELLOW FMR lens		CAT 1	UV 400	78	the ideal lens at fog and strong clouds
SMOKE BLUE FMR lens		CAT 2	UV 400	24,48	this lens increases contrasts, improves depth perception, good for all conditions
GREEN FMR lens, mirror coated		CAT 3	UV 400	14,09	reduces eye fatigue in bright and sunny conditions



STRAP KIT

Color up.

ARTICLE NUMBER

373965

Compatible with all HORIZON, STREAM and INFINITY models

COLOR Red, Green, Blue, Silver, Gold



Sparelens

STIVOT

Best vision in any terrain.

ARTICLE NUMBER

373115 MR black/grey + Sparelens

373125 FMR black/lime + Sparelens

FEATURES

Injected Polycarbonate, spherical double lens, UV400 protection, Anti Fog Triple-Layer foam, compatible with all HEAD helmets, Sparelens included



STREAM MR

Uncompromising style & function.

ARTICLE NUMBER

373505 black/lime

373545 black/grey

FEATURES

Injected Polycarbonate double lens UV400 protection, Anti Fog, Comfort foam, compatible with all HEAD helmets



NUKE

Goggle of choice for price-conscious winter sports enthusiasts.

ARTICLE NUMBER

373605 black

FEATURES

Injected Polycarbonate double lens UV400 protection, Anti Fog Double-Layer foam compatible with all HEAD helmets



Sparelens



HORIZON FMR

Extreme wide field of vision.

ARTICLE NUMBER

373405 black/red + Sparelens

373425 white/blue + Sparelens

373565 black/red

373575 white/blue

FEATURES

Injected Polycarbonate double lens

UV400 protection, Anti Fog

Triple-Layer foam, Extreme Wide field of Vision, compatible with all HEAD helmets, Sparelens included

STREAM FS FMR

All-new goggle technology in freestyle look.

ARTICLE NUMBER

374585 black/red

374595 white/blue

FEATURES

Injected Polycarbonate double lens

UV400 protection, Anti Fog, Comfort

foam, compatible with all HEAD helmets

NUKE

Goggle of choice for price-conscious winter sports enthusiasts.

ARTICLE NUMBER

373625 black/white

FEATURES

Injected Polycarbonate double lens

UV400 protection, Anti Fog,

Double-Layer foam

Compatible with all HEAD helmets



INFINITY FMR

Infinite field of vision
in a frameless design.

ARTICLE NUMBER

373815 pearl

373825 white/berry

373835 white/blue

FEATURES

Injected Polycarbonate double lens

UV400 protection, Anti Fog

Double-Layer foam

Extreme wide Field of Vision

compatible with all HEAD helmets



STREAM RACE YOUTH

The ideal accompaniment
to the STIVOT helmet models.

ARTICLE NUMBER

373215 black

373225 lime

373235 white

FEATURES

Injected Polycarbonate double lens

UV400 protection, Anti Fog, Comfort foam

compatible with all HEAD helmets



NINJA

Your first Head goggle.

ARTICLE NUMBER

373725 black/green

373735 white/pink

FEATURES

Injected Polycarbonate, spherical

double lens, UV400 protection, Anti Fog

Double-Layer foam

compatible with all HEAD helmets

BODY PROTECTION TECHNOLOGY

WE GOT YOUR BACK!
FULL ACTION REQUIRES FULL PROTECTION. NOT LIMITING FREEDOM OF
MOVEMENT, OUR PROTECTORS INCREASE THE SAFETY WHEN HITTING
THE SLOPES.

FEATURES

REMOVABLE PROTECTION UNIT

The Protection Unit can be removed from the parent garment for ease of washing.

REMOVABLE SHOULDER STRAPS

Removable Shoulder Straps can be easily removed and reattached to comply with FIS regulations.

ADJUSTABLE TROUSER CONNECTOR STRAPS

EXTRA WIDE WAIST BELT

The Height Adjustable waist belt measures 120mm in width and delivers a secure, Comfortable fit.

MATERIAL

SAS TEC VISCOELASTIC FOAM

Visco Elastic Foam is a soft, conformable, shock absorbent, temperature resistant material with a 10-year guaranteed lifespan; it also can take repeated beatings and still keep protecting.

POLYGIENE

Polygiene® permanent odor control technology is based on silver salt made from recycled silver. It neutralizes odor by stopping the growth of bacteria on the fabric, so you can wear more and wash less.

THERMO FLEECE

Thermo Fleece delivers warmth, wicks moisture, doesn't restrict movement, has a soft inner and durable, anti-pile treated exterior; tough, yet cosy.

3D MESH

3D Mesh is a three-dimensional fabric that allowing optimal air circulation between fabric and skin.

FLATLOCK SEAMS

High elasticity and tensile strength make Nylon 6 a good choice for applications where toughness, impact resistance and durability are critical.

FITTING

FLEXOR JACKET/VEST/UNIT UNISEX/MEN

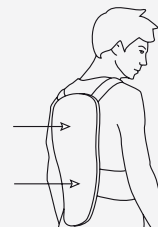
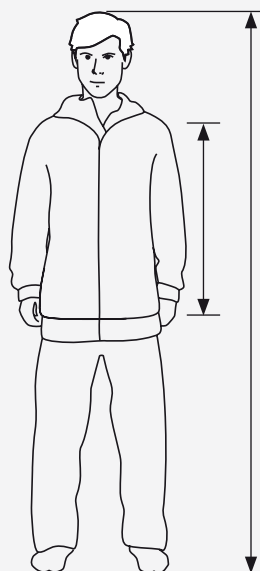
SIZE	HT/CM	HT/INCH	1/CM	1/INCH
S	163	64,2	41	16
M	170	66,9	43	16,7
L	175	68,9	44	17,2
XL	188	74	47	18,5
XXL	212	83,5	53	20,9

FLEXOR VEST/UNIT WOMEN

SIZE	HT/CM	HT/INCH	1/CM	1/INCH
XS	155	61	44	17,4
S	163	64,2	47	18,3
M	170	66,9	49	19,1
L	175	68,9	50	19,7

FLEXOR JACKET/VEST JUNIOR

SIZE	HT/CM	HT/INCH	1/CM	1/INCH
116	130	51,2	37	14,6
128	140	55,1	40	15,7
140	150	59,1	43	16,9
152	160	63	46	18
164	175	68,9	50	19,7



BACK PROTECTOR

A back protector may only provide you with full protection if you have chosen the correct size and adjusted it to your body.



ADJUST THE PROTECTOR

Apply the protector and tighten the straps. The protector shall sit tight against the body without limiting the freedom of movement.



FLEXOR UNIT

FLEXOR VEST

Integrated look, full freedom of movement.

ARTICLE NUMBER

395214

FEATURES

SAS TEC viscoelastic foam, Removable protection unit

Extra wide waist belt

Flatlock seams

Polygiene

SIZES

S - XXL



FLEXOR UNIT RACE

FIS approved back protection.

ARTICLE NUMBER

395314

FEATURES

SAS TEC viscoelastic foam, Removable protection unit

Extra wide waist belt

Removable shoulder straps

3D mesh Polygiene

SIZES

S - XXL



FLEXOR UNIT

We got your back!

ARTICLE NUMBER

395324

FEATURES

SAS TEC viscoelastic foam, Removable protection unit

Extra wide waist belt

Removable shoulder straps

3D mesh, Polygiene

SIZES

S - XXL



FLEXOR VEST WOMAN

Stay warm & safe.

ARTICLE NUMBER

395614

FEATURES

SAS TEC viscoelastic foam, Removable protection unit
Extra wide waist belt, Flatlock seams, Thermo fleece, Polygiene

SIZES XS - L



FLEXOR JR VEST

Safe & cozy.

ARTICLE NUMBER

395714

FEATURES

SAS TEC viscoelastic foam, Removable protection unit
Extra wide waist belt, Flatlock seams, Polygiene

SIZES 116, 128, 140, 152, 164



FLEXOR JR UNIT RACE

FIS approved back protection.

ARTICLE NUMBER

395824

FEATURES

SAS TEC viscoelastic foam, Removable protection unit
Removable shoulder straps, 3D mesh, Polygiene

SIZES 116, 128, 140, 152, 164



FLEXOR JR UNIT

Full action – full protection.

ARTICLE NUMBER

395814

FEATURES

SAS TEC viscoelastic foam, Removable protection unit
Removable shoulder straps, 3D mesh, Polygiene

SIZES 116, 128, 140, 152, 164